

# Emergency Management Plan

Paralowie R-12 School

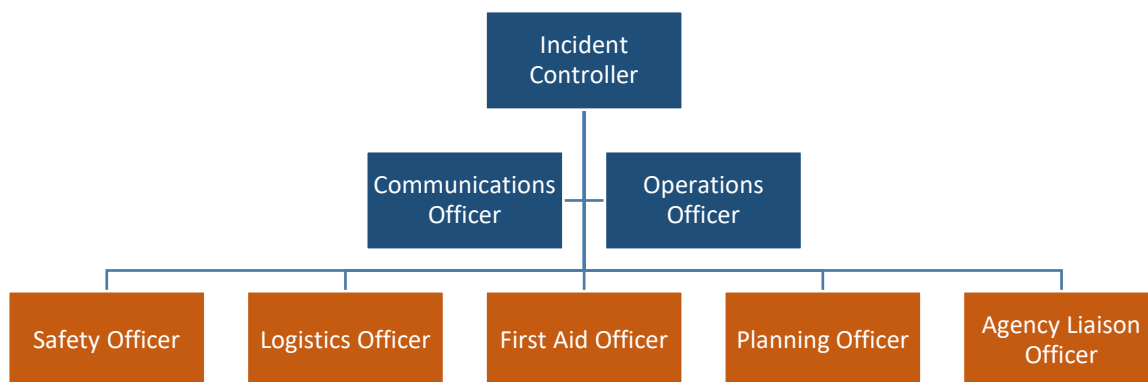


**Government of South Australia**  
Department for Education

# Incident response group

Each site will have an Incident Response Group (IRG) stood up during an actual or imminent occurrence of an emergency. The group will be responsible for implementing the action plans in response to various situations, in accordance with the Emergency Management Plan.

**Figure 1** below shows an *example* of an Incident Response Group and includes **mandatory roles** of an **Incident Controller**, a **Communications Officer** and an **Operations Officer**. In the case of smaller sites, the Communications Officer and Operations Officer may be the same person or, where appropriate, all three roles may be performed by the same person.



**Figure 1** Example of an Incident Response Group, including mandatory (blue) and optional roles (orange)

## Summary Table for Incident Response Group - Roles and Responsibilities

Role	Responsibilities	
	Following enactment of initial emergency response	Post emergency
Incident Controller	Provides leadership, directs, and coordinates resources to ensure the safety of occupants at the site	Collates relevant information from various members of the IRG. Provides input to facilitate review of the actions taken and recommendations to amend plans
Operations Officer	Oversees the implementation of the relevant action plans. Responsible for managing, supervising, and monitoring ongoing operations.	Assesses damage to property and to restore facilities and services.
Communications Officer	Manages and monitors all communications with internal and external agencies e.g., Security and Emergency Management, emergency services or parents/caregivers	Issues communiques for staff, students, parents/caregivers, and the community. Attends to queries relating to the incident.
Safety Officer	Works closely with other members to ensure work, health, and safety of occupants at the site during the incident.	Reviews the safety of the site and its facilities. Makes recommendations to mitigate resultant risks.
Logistics Officer	Manages the logistical needs, including equipment, services, and manpower to facilitate the operations.	Reviews the status of the emergency equipment and services. Makes recommendations to reinstate them.
First Aid Officer	Administers first aid to occupants. Documents occurrences of illnesses and injuries requiring treatment.	Reviews the status of the first aid equipment. Makes recommendations to reinstate them.
Planning Officer	Collects and evaluates information related to the incident and resources. Formulates strategies to mitigate identified risks for development for implementation by the Incident Controller.	Liaises with the Incident Controller and Operations Officer to review the incident and risk identified during the emergency. Make recommendations to enhance the plan.
Agency Liaison Officer	Assists the Communications Officer with liaison with internal and external agencies.	Assists the Communications Officer in the issuance of communiques and to attend to queries related to the incident.



## Site profile

Site Name	Paralowie R-12 School
Address	168-186 Whites Road, Paralowie
Site Telephone	08 8182 7222
Email	<a href="mailto:dl.1099.info@schools.sa.edu.au">dl.1099.info@schools.sa.edu.au</a>
Hours of operation	Monday – Friday 8:40am to 3:00pm
Name of any other service operated on site eg: OSHC, Dentist, sports, music	Clontarf / STARS Academies

## Staff/Student information

Number of current enrolments	1538
Number of staff	197
Proportion of staff disability/health factors (%) *Please ensure Personal Emergency Evacuation Plan (PEEP) is completed and stored in local response procedure	Click or tap here to enter text.
Proportion of student with disability/special education needs (%) *Please ensure Personal Emergency Evacuation Plan (PEEP) is completed and stored in local response procedure	11%



# Tones for activation of emergency procedures

## Shelter in place

<b>Alarm tone/alert method used</b>	Short Blast for 15 seconds
<b>Duration/pattern of alarm tone</b>	(- - - - - - - - - - - - - - - - )
Move to the designated Shelter in building	

## Lockdown

<b>Alarm tone/alert method used</b>	Short Blast for 15 seconds
<b>Duration/pattern of alarm tone</b>	(- - - - - - - - - - - - - - - - )
Follow lockdown procedure in local response procedures	

## Onsite evacuation

<b>Alarm tone/alert method used</b>	Continuous for 15 seconds
<b>Duration/pattern of alarm tone</b>	(----- )
Refer to displayed evacuation diagram	

## Offsite evacuation

<b>Alarm tone/alert method used</b>	Continuous for 15 seconds
<b>Duration/pattern of alarm tone</b>	(----- )
<b>Method used to inform building occupants when evacuation is to offsite location is required eg: verbal</b>	Internal Phone. PA System to make announcements to Take Action. "ATTENTION, ATTENTION, ATTENTION..."
Follow offsite evacuation procedure in local response procedures	

Services governed by the *Education and Care Services National Regulations* are required to display this page alongside their evacuation diagrams.



## Student collection protocol

<b>Do you have a student attendance record in place?</b>	Yes
<b>Do you have a student collection process in place during emergency?</b>	Yes

## Communication process

<b>Do you have a communication process in place for notifying your parents and school community of emergencies and/or bushfire?</b>	Yes
---	-----

